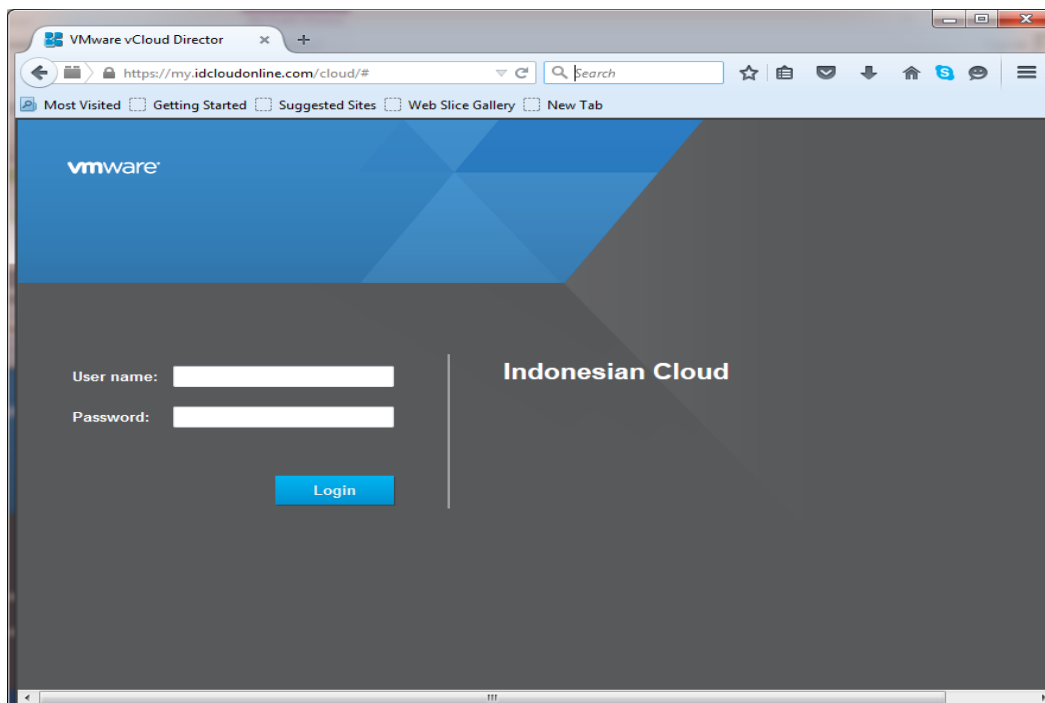


## User Guide Snapshot

To perform snapshot, customer can do either in vApps level or VM level. snapshot in vApps will allow customer to have snapshot for all VM within the vApps while snapshot in a VM will capture only to the VM. Customer only have one snapshot per VM.

## Access to Virtual Data Center

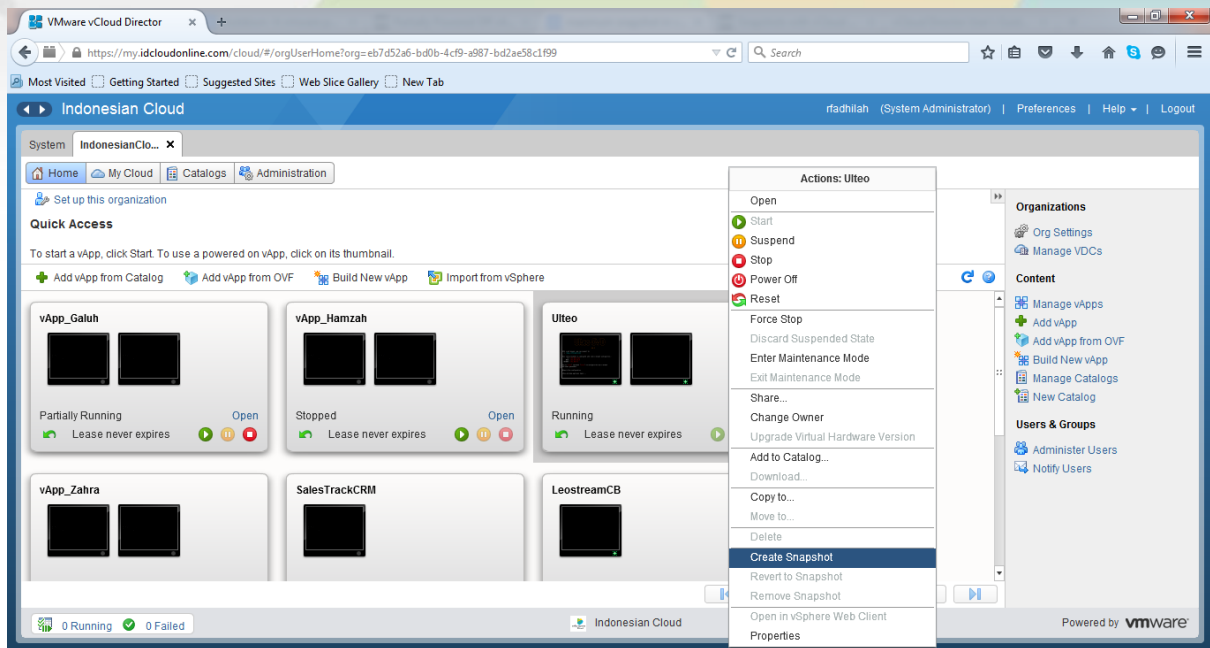
URL : <https://my.idcloudonline.com>



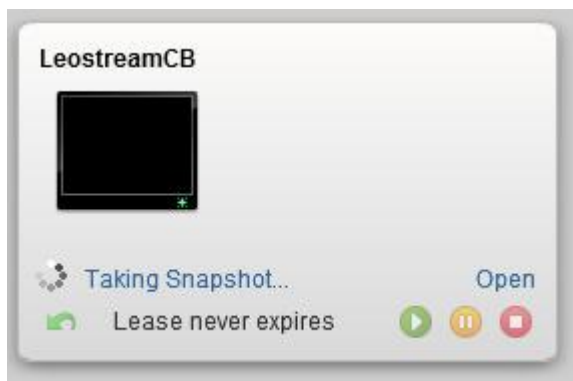
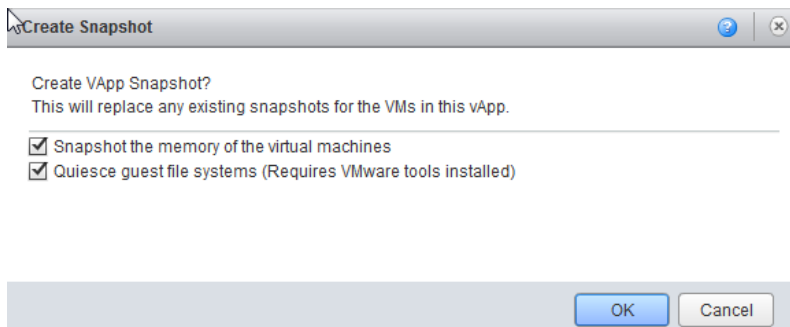
## vApps

### Create Snapshot

To Create snapshot, right click in vApp and choose "Create Snapshot"

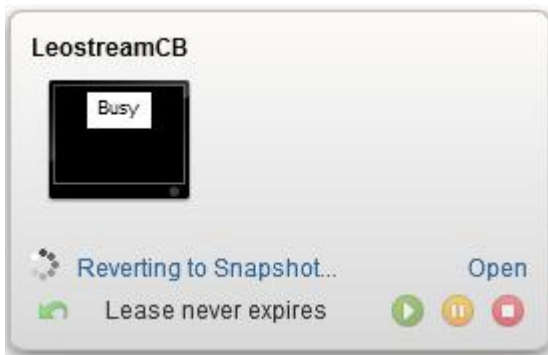
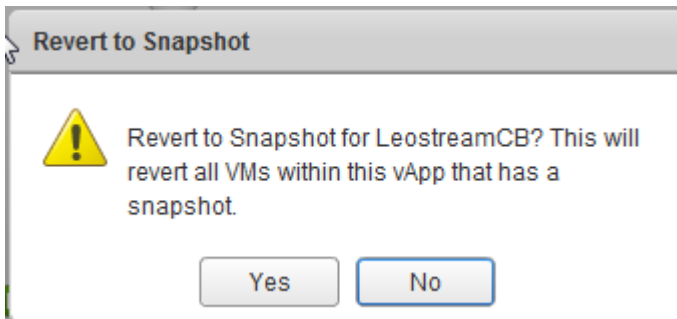
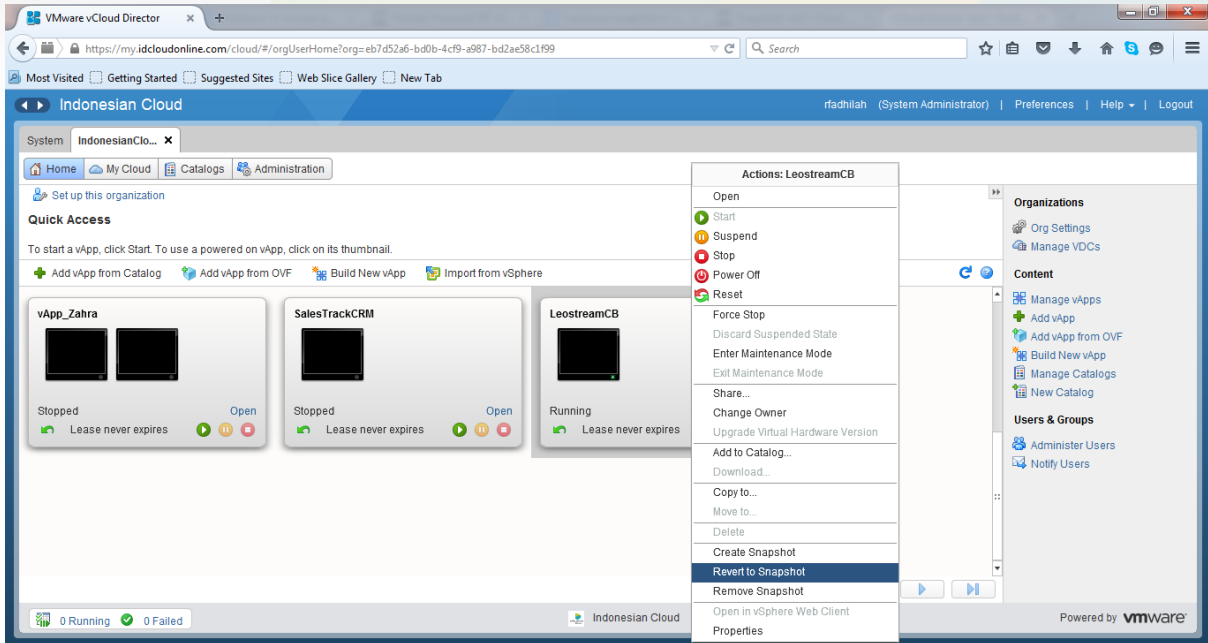


Confirmation then click Yes.

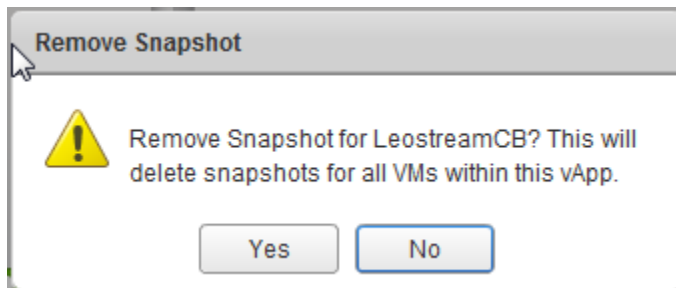
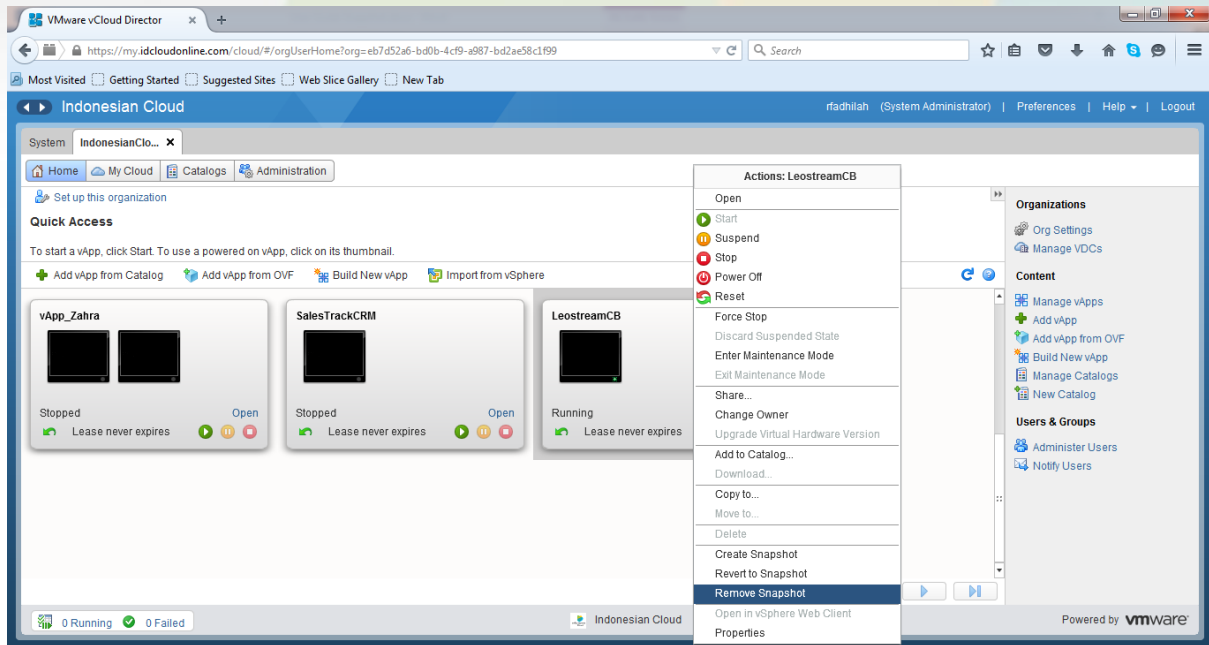


## Revert Snapshot

Right click in vApp and choose "Reverts Snapshot"



## Remove Snapshot

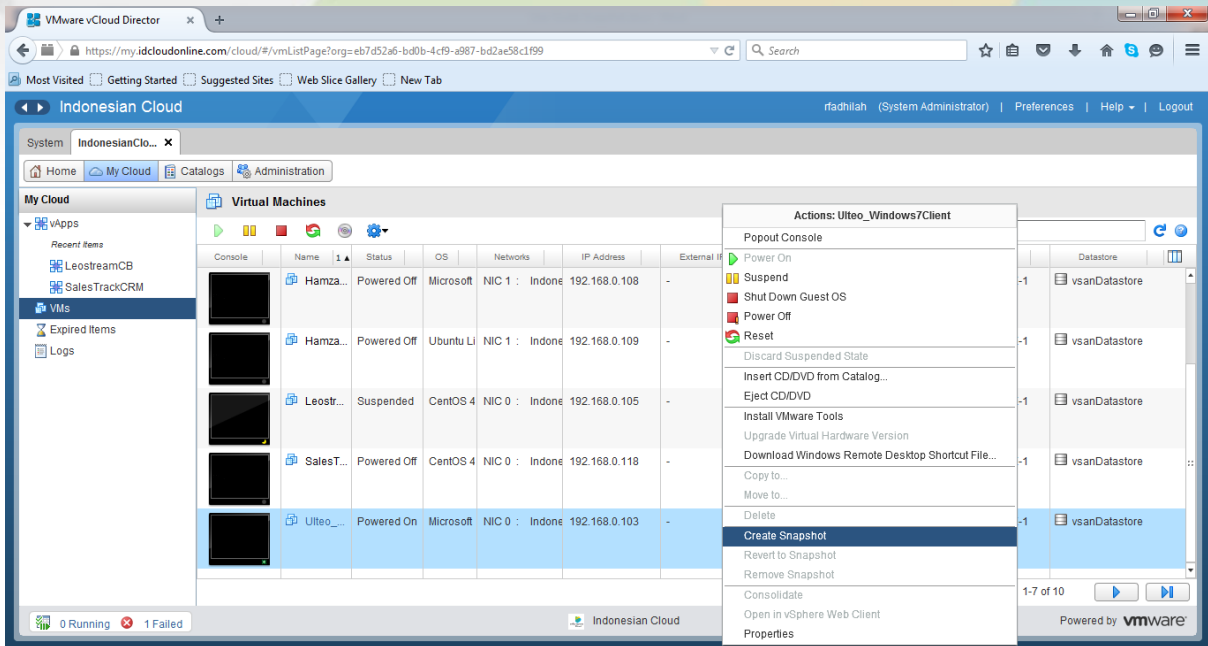


## Virtual machine

customer only have one snapshot per VM.

## Create Snapshot

From My Cloud > VM, right click the VM



VMware vCloud Director

https://my.idcloudonline.com/cloud/#/vmListPage?org=eb7d52a6-bd0b-4cf9-a967-bd2ae58cf99

Indonesian Cloud

System IndonesianClo... x

Home My Cloud Catalogs Administration

My Cloud

- vApps
  - Recent Items
    - LeostreamCB
    - SalesTrackCRM
  - VMS
  - Expired Items
  - Logs

Virtual Machines

Console	Name	Status	OS	Networks	IP Address	External IP
	Hamza...	Powered Off	Microsoft	NIC 1 : Indone	192.168.0.108	-
	Hamza...	Powered Off	Ubuntu Li	NIC 1 : Indone	192.168.0.109	-
	Leostr...	Suspended	CentOS 4	NIC 0 : Indone	192.168.0.105	-
	SalesT...	Powered Off	CentOS 4	NIC 0 : Indone	192.168.0.118	-
	Ulteo_...	Powered On	Microsoft	NIC 0 : Indone	192.168.0.103	-

0 Running 1 Failed

Indonesian Cloud

Actions: Ulteo\_Windows7Client

- Popout Console
- Power On
- Suspend
- Shut Down Guest OS
- Power Off
- Reset
- Discard Suspended State
- Insert CD/DVD from Catalog...
- Eject CD/DVD
- Install VMware Tools
- Upgrade Virtual Hardware Version
- Download Windows Remote Desktop Shortcut File...
- Copy to...
- Move to...
- Delete
- Create Snapshot
- Revert to Snapshot
- Remove Snapshot
- Consolidate
- Open in vSphere Web Client
- Properties

1-7 of 10





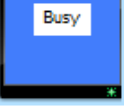
Powered by VMware

Create Snapshot

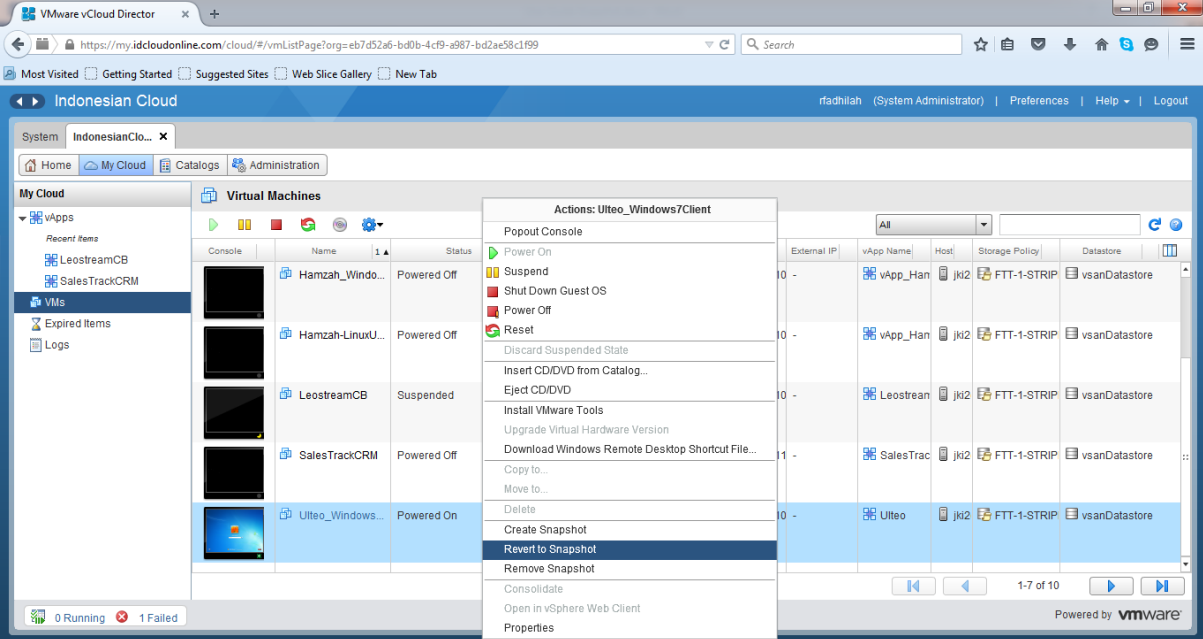
Create VApp Snapshot?  
This will replace any existing snapshots for the VMs in this vApp.

- Snapshot the memory of the virtual machines
- Quiesce guest file systems (Requires VMware tools installed)

OK Cancel

Console	Name	Status	OS	Networks	IP Address
	Hamzah_Windo...	Powered Off	Microsoft Win	NIC 1 : Indonesia	192.168.0.10
	Hamzah-LinuxU...	Powered Off	Ubuntu Linux	NIC 1 : Indonesia	192.168.0.10
	LeostreamCB	Suspended	CentOS 4/5/6	NIC 0 : Indonesia	192.168.0.10
	SalesTrackCRM	Powered Off	CentOS 4/5/6	NIC 0 : Indonesia	192.168.0.11
	Ulteo_Windows...	Taking Snapshot...	Microsoft Win	NIC 0 : Indonesia	192.168.0.10


## Revert Snapshot











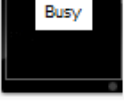


The screenshot shows the VMware vCloud Director web interface. The 'Virtual Machines' section is active, displaying a list of VMs. The 'Ulteo\_Windows7Client' VM is selected, and the 'Actions' menu is open. The 'Revert to Snapshot' option is highlighted in blue. The background shows a table of VMs with columns for External IP, vApp Name, Host, Storage Policy, and Datastore.

External IP	vApp Name	Host	Storage Policy	Datastore
0 -	vApp_Han	jk12	FTT-1-STRIP	vsanDatastore
0 -	vApp_Han	jk12	FTT-1-STRIP	vsanDatastore
0 -	Leostream	jk12	FTT-1-STRIP	vsanDatastore
1 -	SalesTrac	jk12	FTT-1-STRIP	vsanDatastore
0 -	Ulteo	jk12	FTT-1-STRIP	vsanDatastore

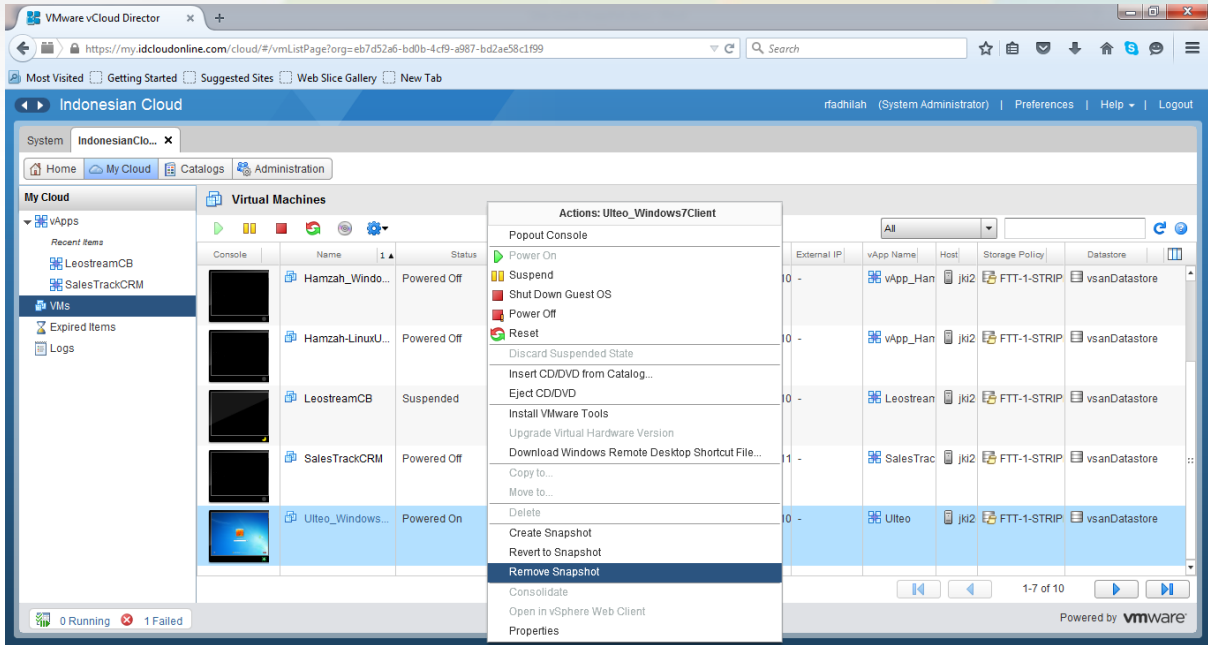
**Revert to Snapshot**

 Revert to Snapshot for Ulteo\_Windows7Client?

Yes No

Console	Name	Status	OS	Networks	IP Address
	 Hamzah_Windo...	Powered Off	Microsoft Win	NIC 1 : Indonesia	192.168.0.10
	 Hamzah-LinuxU...	Powered Off	Ubuntu Linux	NIC 1 : Indonesia	192.168.0.10
	 LeostreamCB	Suspended	CentOS 4/5/6	NIC 0 : Indonesia	192.168.0.10
	 SalesTrackCRM	Powered Off	CentOS 4/5/6	NIC 0 : Indonesia	192.168.0.11
	 Ulteo_Windows...	 Reverting to Snapshot...	Microsoft Win	NIC 0 : Indonesia	192.168.0.10


## Delete Snapshot



The screenshot shows the VMware vCloud Director web interface. The 'Virtual Machines' section is active, displaying a list of VMs. The 'Ulteo\_Windows7Client' VM is selected, and the 'Actions' menu is open, showing the 'Remove Snapshot' option highlighted. The background table lists several VMs with their respective hosts and storage policies.

External IP	vApp Name	Host	Storage Policy	Datastore
0 -	vApp_Han	jk12	FTT-1-STRIP	vsanDatastore
0 -	vApp_Han	jk12	FTT-1-STRIP	vsanDatastore
0 -	Leostream	jk12	FTT-1-STRIP	vsanDatastore
1 -	SalesTrac	jk12	FTT-1-STRIP	vsanDatastore
0 -	Ulteo	jk12	FTT-1-STRIP	vsanDatastore

**Remove Snapshot**

 Remove Snapshot for Ulteo\_Windows7Client?